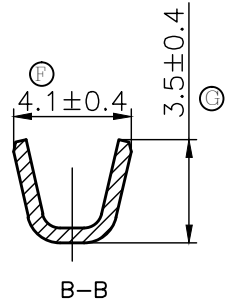
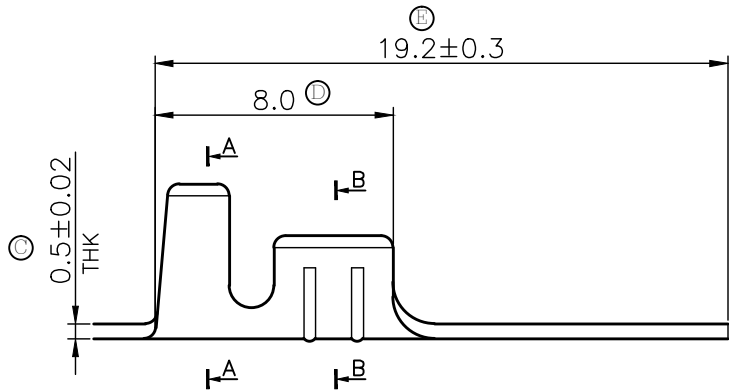
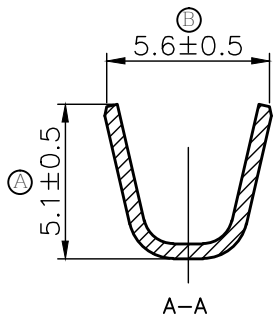
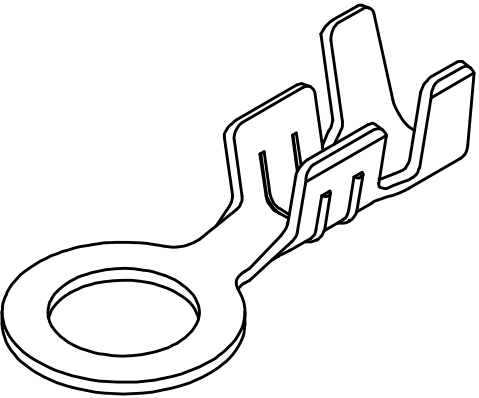
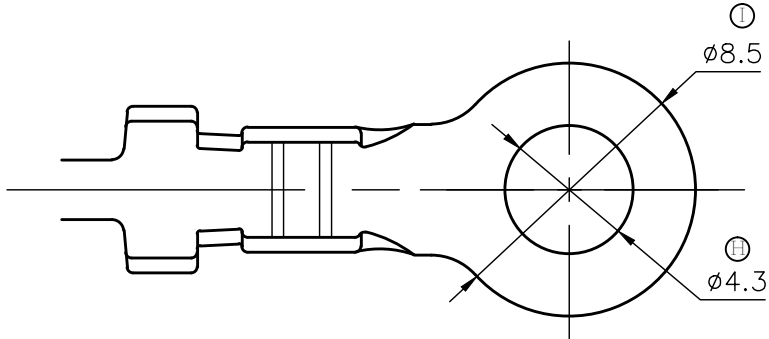



REV.	DESCRIPTION	APPROVED	DATE
A	INITIAL RELEASE	L.H.L	2018/10/29

- 1 MATERIAL: STEEL
FINISH: NI-PLATED
- 2 WIRE RANGE: 18-16 AWG
INSULATION RANGE: $\phi 2.5-\phi 3.1$
- 3 5000 PCS/REEL, 3 REELS/BOX,
TOTAL 15000 PCS/BOX
- 4 CONTINUOUS STRIP ON REELS.
- 5 PARTS ARE ROHS COMPLIANT.



CUSTOMER DRAWING	TITLE	MODEL NO.: RT8504303-S1-50	DWN: L.H.L	2018/10/29	 力幹企業有限公司 POWER ACT ENTERPRISE LIMITED
	RING TERMINAL	DWG NO. : CD-RT850-027	REA: A	CHK: C.H.P	
GENERAL TOLERANCES (UNLESS SPECIFIED) .X ±0.2 .XX ±0.05 .XXX ±0.01 A' ±2'		UNIT: mm	SCALE: 5:1	APP: MARTIN	2018/10/29