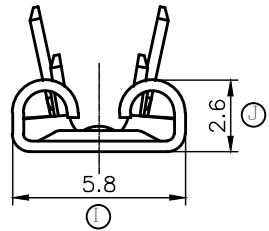
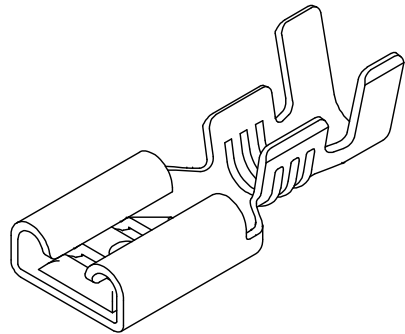
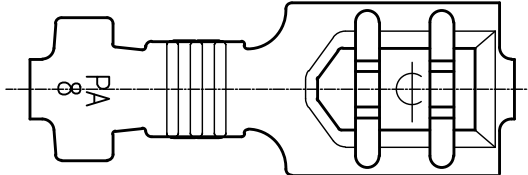
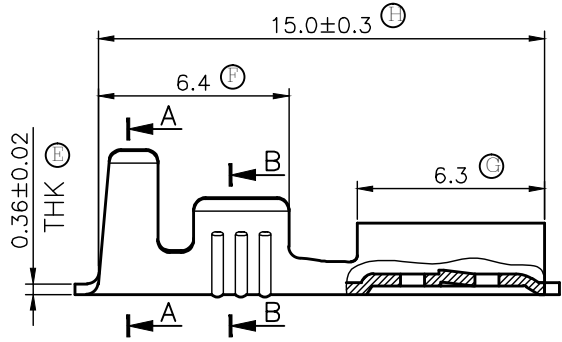
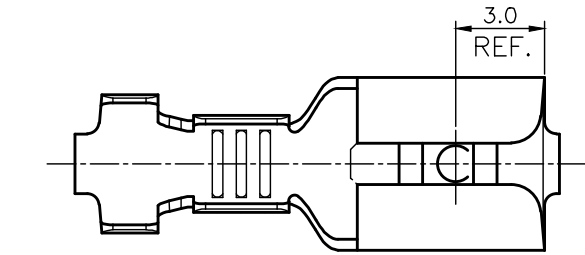
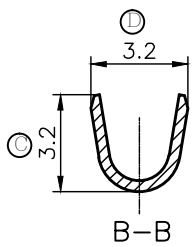
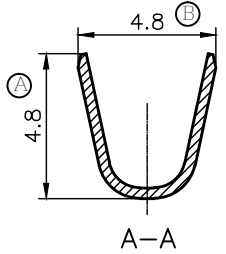


REV.	DESCRIPTION	APPROVED	DATE
A	INITIAL RELEASE	L.H.L	2004/04/12
B	E0041132	L.H.L	2004/12/02
C	E0050526	L.H.L	2005/05/18
D	E0210311	L.H.L	2021/03/24

- 1 MATERIAL: BRASS
- FINISH: TIN-PLATED
- 2 MATING TAB: 4.8X0.8
- 3 WIRE RANGE: 0.5~1.0mm² (22-18AWG)
- INSULATION RANGE: $\phi 2.0-\phi 3.1$
- 4 CONTINUOUS STRIP ON REELS.
- 5 PARTS ARE ROHS COMPLIANT.



CUSTOMER DRAWING	TITLE .187 SLIP-ON RECEPTACLE	MODEL NO.: ST1870802	DWN: L.H.L	2021/03/24	
		DWG NO. : CD-ST187-004	REA: A	CHK: C.H.P	2021/03/24
GENERAL TOLERANCES (UNLESS SPECIFIED) .X ±0.2 .XX ±0.05 .XXX ±0.01 A' ±2'		UNIT: mm	SCALE: 4:1	APP:	力幹企業有限公司 POWER ACT ENTERPRISE LIMITED